



Brita Kreutzfeldt

Painting & drawing

Front and back cover: Meating place (detail) · 2019 · Various techniques on canvas · 80 x 58 cm



“After working with oil paints, brushes, rags and spatulas – sometimes based on models like Feininger – I now work intuitively. Oil or acrylic paints are applied or poured onto the painting surface. I pay attention to a dynamic interaction of colours, lines and light.

Various techniques and materials such as transparent gel, pigments, marble flour, faceted varnish and spray cans are typical for the kind of work I do today. Following the forms, lines and gradients, I often discover figures, mythical creatures and faces that spring from my world of ideas and fantasy.”

Header · 2018 · Various techniques on canvas · 60 x 90 cm





Viewing angle 1 · 2019



Viewing angle 2 · 2019



Viewing angle 3 · 2019 · Various techniques on wood · each 15 x 15 x 6 cm

Viola da Gamba · 2017 · Various techniques on canvas · 60 x 90 cm





Hall of mirrors · 2019 · Various techniques on canvas · 70 x 50 cm



Callas · 2019 · Various techniques on canvas · 70 x 50 cm



On the way · 2018 · Various techniques on cardboard · 80 x 60 cm



Rank growth · 2018 · Various techniques on cardboard · 70 x 50 cm



Parting · 2019 · Various techniques on canvas · 45 x 32 cm



Meeting place · 2019 · Various techniques on canvas · 80 x 58 cm



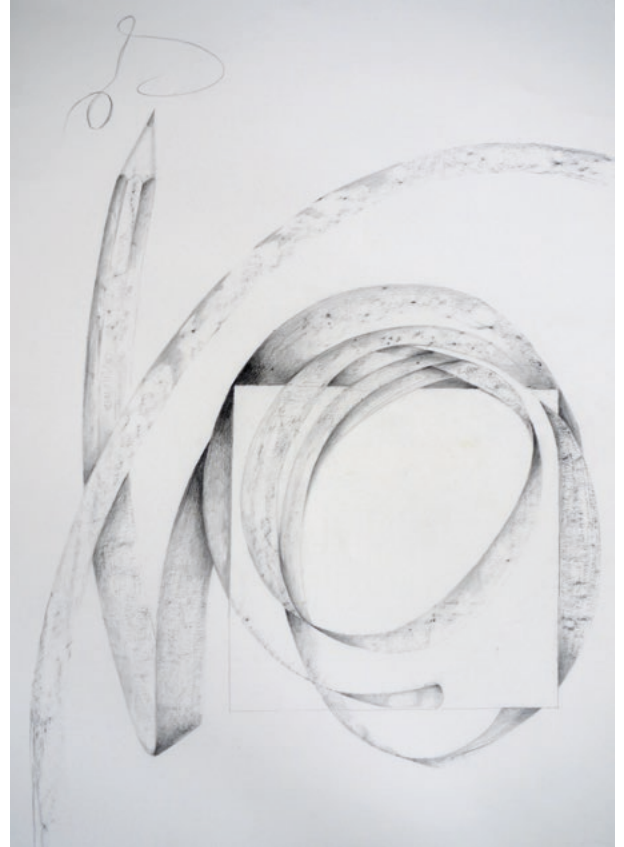
Pause · 2015 · Various techniques on cardboard · 70 x 50 cm



On stilts · 2014 · Various techniques on cardboard · 60 x 50 cm

Fall of mankind · 2014 · Indian ink, grafite on paper · approx. 50 x 36 cm





Untitled · 2014 · Grafite, charcoal on paper · each 70 x 50 cm



Biography

1941

Born in Eberswalde

1967

State exam for the teaching profession at the universities of Heidelberg, Bonn and Cologne

1968

Teacher training certificate at Dortmund in English and geography

since 1968

Teaching in Dortmund

1970/71

Teaching and painting school in York/USA

since 2003

Self-employed artist

since 2007

KUNSTSCHULE Atelier Sternentor, Dortmund

Solo exhibitions

1976

Amerikan Consulate General, Düsseldorf
Law office Holzhauser, Essen

1980

Gallery Uniewski, Dortmund

1981

Gallery Bieletzki, Geiseke

2014

Gallery Ermlinghofen, Dortmund

Group exhibitions

2010–2013

Gallery Ermlinghofen, Dortmund

2015–2018

Gallery Ermlinghofen, Dortmund

2017

Museum for Art & Cultural History, Dortmund

2019

ART-isotope · Gallery Schöber, Wertheim

Gallery cooperation

Gallery Ermlinghofen, Dortmund / Germany

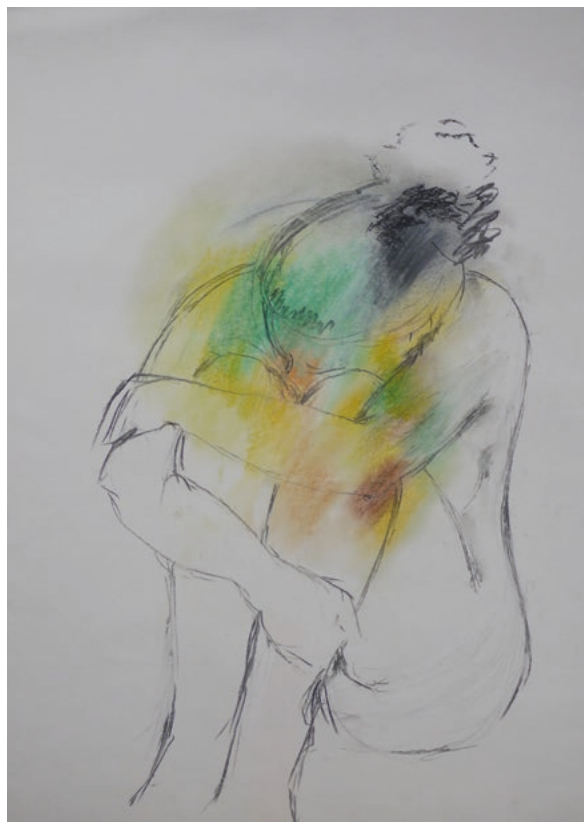
Contact

+49 - (0)231 - 189 459 0

brita-kreutzfeldt@t-online.de



Nude 1 · 2014



Nude 2 · 2014



Nude 3 · 2014 · Grafite, charcoal on paper · each approx. 50 x 36 cm



www.brita-kreutzfeldt.de

Layout & typesetting: Axel Schöber, Dortmund